



Summer Issue 2007

Enfield EBP & Work Experience

Newsletter



Welcome

Welcome to the latest edition of our Newsletter. We hope you find it useful in keeping you informed about some of the developments that are taking place with regard to education business links and Work Related Learning. As you will see, this edition includes information about a range of topics, including some of the Enfield EBP's projects, and a summary of a recent CBI Report on Work Experience. However, if there are any particular topics you would like us to consider for

inclusion in future editions please let us know. The valuable contribution that employers can make to students' learning and to the curriculum continues to be highlighted by the Government. Our thanks go to the many local businesses that are already involved in links with education. If you'd like to get more involved, just give us a call or email us (contact details are on the back page). We look forward to hearing from you soon!

That's Quality!

We are delighted to announce that the Enfield EBP has achieved the National Education BusinessPartnership Network (NEBPN) Quality Award accreditation, which is endorsed by the DfES. We are now part of a growing number of EBPs across the country who have met the criteria for the Quality Award which includes an assessment of the outcomes for young people, schools, colleges and businesses resulting from the EBP's activities as well as the EBP's business processes and relationships with partners organisations.

A team of three Assessors spent a day at the Enfield Business Centre interviewing EBP staff and gathering evidence from almost 30 representatives from local businesses, schools, colleges, the Local Authority, the North London Chamber of Commerce and a range of other business support agencies. The Assessors also examined a portfolio of supporting written evidence.

In addition to highlighting the quality of the EBP's Work Experience and other Work Related Learning programmes, the Assessors commented on how impressed they were by the dedication of the staff and by the way in which partner organisations valued the work of the EBP in helping prepare young people in Enfield for the world of work.



Some of our 'witnesses' networking before being interviewed by the Assessors.

Chris Gill, Chairman Enfield EBP, said, *"On behalf of the Board of Trustees, I would like to thank all the staff of Enfield Education Business Partnership on achieving this well deserved National Quality Award. Our schools, colleges and businesses have always appreciated the quality of the Work Related Learning projects and Work Experience opportunities we provide. Now we have the National EBP Quality Award seal of approval as a further endorsement of the quality and professionalism of our services. Thank you to everyone who has helped to make Enfield EBP such a success."*

If you think your company would like to get more involved in the work of the EBP, just email info@enfield-ebp.org.uk or call 020 8443 2114.

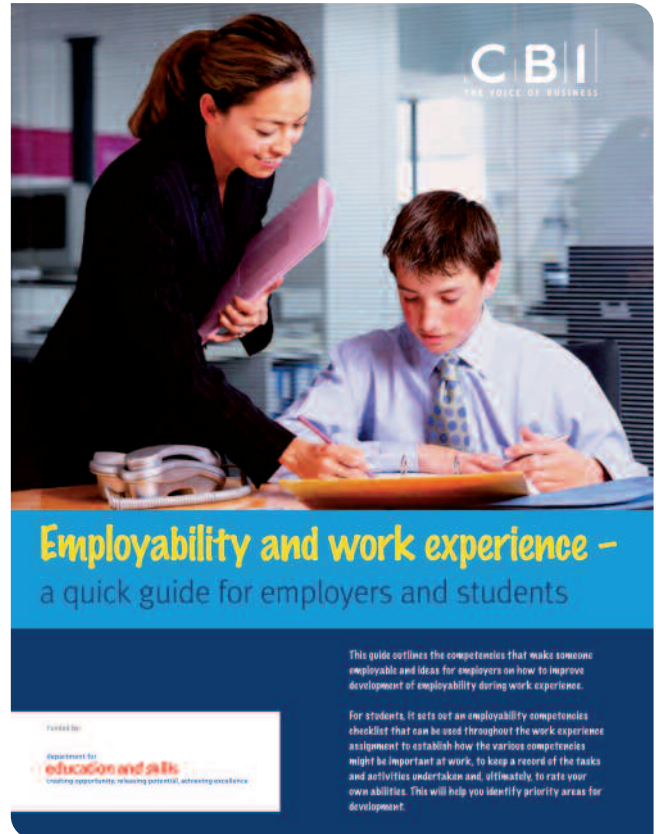
Time Well Spent

The CBI (Confederation of British Industry) recently published a report called 'Time Well Spent' that focussed on how young people's employability skills could best be developed through Work Experience. The Report begins with the words

"Work Experience has a key role to play in preparing young people for the adult world. For most, it is their first taste of the workplace. With some 95% of students undertaking Work Experience placements in the run-up to GCSEs (Key Stage 4) this is a critical time in life. Patterns and attitudes are being formed that young people will carry forward into their working lives... A couple of weeks of Work Experience account for a tiny proportion of young people's time in education, but it is hard to overstate the potential importance of that brief period for their future employability."

Whilst the full report includes a number of case studies, results of surveys with employers and schools and an explanation of what is meant by 'employability', there is also an Annex on 'Employability & Work Experience – a quick guide for employers and students'. This brief guide re-states the competences that the CBI believe make up 'employability', namely:

- self-management
- team-working
- problem-solving
- application of IT
- communication & literacy
- application of number
- business and customer awareness



Together, these personal attributes are summed up by the CBI as having a 'can-do' approach and a **'positive attitude'**, which is seen as critical to being employable.

The report contains advice for employers on how to help embed opportunities for developing these competences as part of the Work Experience placements they offer. These include tips on having clear objectives, on using the induction session to set the focus for the placement and ensuring there is good feedback, which the CBI sees as the key to embedding the learning.

Enfield Science & Technology Challenge 2007 Awards

Whilst the standard of the work exhibited by all the participating schools at this year's Enfield Science & Technology Challenge Awards event was very high, the work done by the pupils from Russet House school (pictured here with the Deputy Mayor, Councillor Lee Chamberlain and some of their teachers) impressed the judges so much that they were presented with a special 'Judges Award'. Oakthorpe Primary School were the overall winners of the Primary school category and Highlands school won the overall Secondary school category. The Challenge is supported by Enfield Council and a range of local business sponsors. For further details, contact the EBP.



Making the Most of Work Experience

Schools prepare their students for Work Experience in a variety of ways. For many students this is their first experience of the workplace and apart from the practicalities, such as how to get to their placement, there are other aspects that also need to be covered. Staff from Enfield EBP have now supported several schools with Work Experience preparation programmes to help maximise students' learning opportunities.

We recently organised two 'Year 10 Conferences' at Salisbury School during which the normal timetable was suspended and students took part in various workshops that formed a key part of their Work Experience preparation. The feedback suggests that the students felt they were much better prepared for the challenges in work as a result.

We also offer a Work Experience De-briefing programme, which is delivered in partnership with school staff over one or two lessons. This programme was recently run at Winchmore School and involved the whole Year Group of over 250 students. This provided an excellent opportunity to gather information from the students about their placements and the way in which the experience had enhanced their learning about the world of work.

The EBP is also able to offer a range of other workshops, including:

- CV Writing & Interview Skills
- Practice Interviews
- Job / Career Searching
- Negotiation Skills
- Health & Safety
- Financial Skills
- Presentation Skills.

These can either be delivered as stand-alone activities or combined to create an event focussing on particular elements of Work Related Learning.

Contact Enfield EBP for more details about our Work Experience support programme and other workshops.



Students taking part in a drama workshop at the Salisbury School Year 10 Conference

Food For Thought at Outback Steakhouse

On 20th June Year 10 students from Broomfield School found out what it was like to work in a real life restaurant- The Outback Steakhouse, in Enfield.

Mike Hicks, restaurant manager organised the day with Enfield EBP as part of their commitment to working with the community. Students and teachers together learnt about how a business is run. They had hands on experience in the kitchen ranging from preparing salads, grilling fresh meat and of course making the famous Blooming Onion! Students commented on how it had opened their eyes to the organisational skills needed in such a fast paced environment. If you would like to involve your school in projects such as these, please contact Maxine Reed at Enfield EBP.



Spice up your Inset Day!

How well do your colleagues understand their responsibilities in Work Related Learning and Enterprise? How confident is your school about these subjects when viewed across the entire curriculum?

At a recent staff in-service training day at St Anne's Catholic School for Girls, Enfield EBP delivered an entertaining but thought-provoking session to

stimulate the ideas as to ways in which both Work Related Learning and Enterprise can be delivered across all subjects in the curriculum. The feedback from the session has been very positive – so why don't you suggest we stimulate your next Inset Day!!

For more details please contact us (see below for contact details)

Number Partners

We all know playing games is much more fun than going to work. At Walker Primary School 14 volunteers from Lloyds TSB Asset Finance Division spend an hour a week playing numeracy games with Year 2 pupils and everyone has lots of fun. However, there are additional benefits to the pupils as they practice and improve their number skills and their confidence increases as they play the game with a friend and volunteer. The company also benefits by giving back to the local community and volunteers feeling more motivated.

Could your company provide volunteers for a similar programme in another school? The Enfield Education Business Partnership would train volunteers and facilitate the partnership, as well as carrying out the necessary CRB Checks (Criminal Records Bureau). If you are interested please call Jenny on 020 8443 2114.

Coming Soon for Primary Schools



Countryside Live is planned for 20th and 21st September at the Waltham Abbey Showground. This year is the 40th Anniversary of Lee Valley Regional Park and they are looking to increase the size of the event, but also the number of boroughs invited. Send your booking form back early to avoid disappointment.



Contact us

If you need anymore information please contact:

Enfield EBP

Enfield Business Centre

201 Hertford Road, Enfield EN3 5JH

Tel: **020 8443 2114**

Fax: **020 8443 3822**

email: **info@enfield-ebp.org.uk**

websites: **www.enfield-ebp.org.uk**

www.enfield-workex.org.uk